



GAT MONTHLY MEMBERSHIP PROGRESS REPORT

Results as of: 6/30/2024

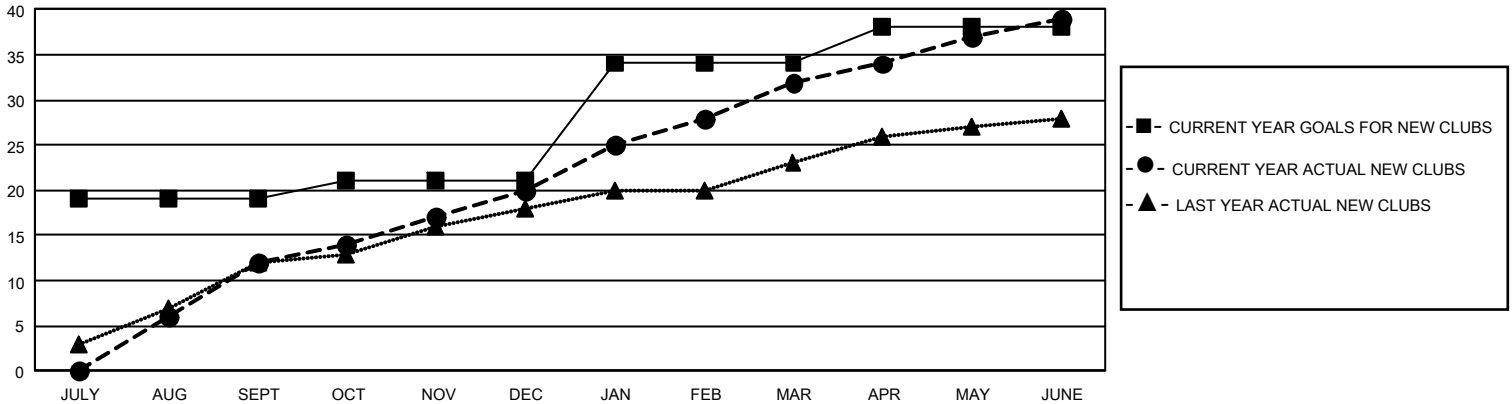
GMT Constitutional Area 5 - K, Group K

REPORT DOES NOT INCLUDE CLUBS IN UNDISTRICTED AREAS.

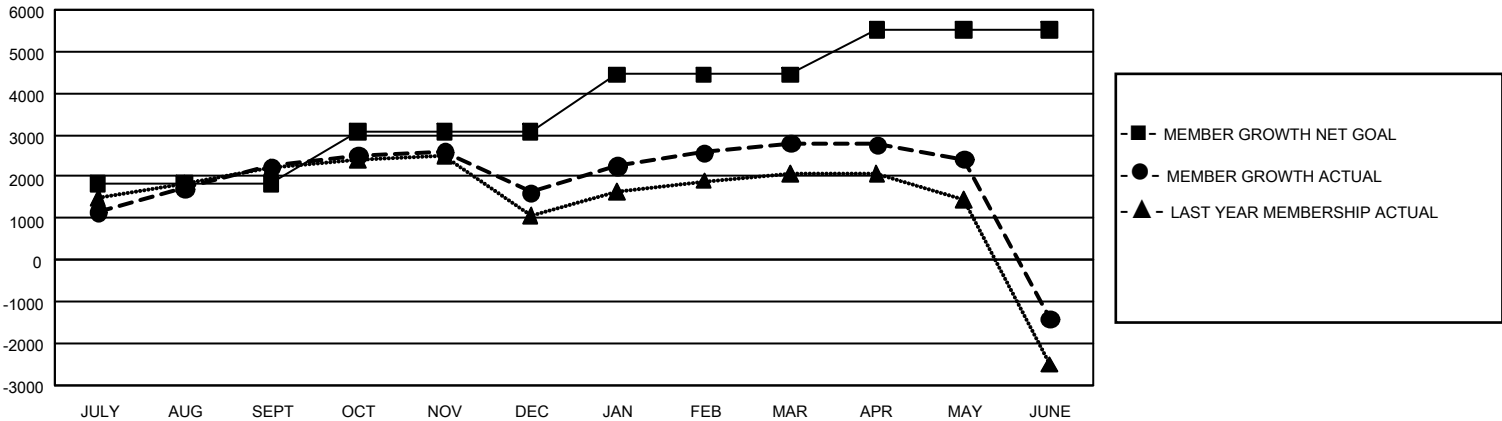
Clubs			
RESULTS FOR 2023-2024			
QUARTER	NEW CLUB GOAL	NEW CLUBS	DROPPED CLUBS
JULY/AUG/SEPT	57	12	9
OCT/NOV/DEC	6	8	14
JAN/FEB/MAR	39	12	2
APR/MAY/JUNE	12	7	25

Members			
RESULTS FOR 2023-2024			
QUARTER	MEMBER GROWTH NET GOAL	MEMBER GROWTH ACTUAL	DROPPED MEMBERS ACTUAL (including transfers)
JULY/AUG/SEPT	1828	4,741	2,248
OCT/NOV/DEC	1256	2,235	2,739
JAN/FEB/MAR	1363	2,570	1,251
APR/MAY/JUNE	1085	1,885	5,911

GOALS AND ACTUAL NEW CLUBS CUMULATIVE



GOALS AND ACTUAL MEMBERS CUMULATIVE



DROPPED CLUBS: 47	1,700 CLUBS OF 2,050 ADDED 1 OR MORE NEW MEMBERS	<u>GENDER DISTRIBUTION</u>	
		MALE	51,064 (73.90%)
<u>DROPPED MEMBERS</u>		FEMALE	18,030 (26.09%)
DECEASED	245	NON BINARY	0 (0.00%)
CLUB CANCELLED	605	PREFER NOT TO ANSWER	7 (0.01%)
OTHER	11,257	TOTAL FAMILY UNIT MEMBERS	3,729
TOTAL	12,107	FAMILY MEMBERS PAYING HALF DUES	2,154

[CLICK HERE FOR CUMULATIVE MEMBERSHIP DATA](#)